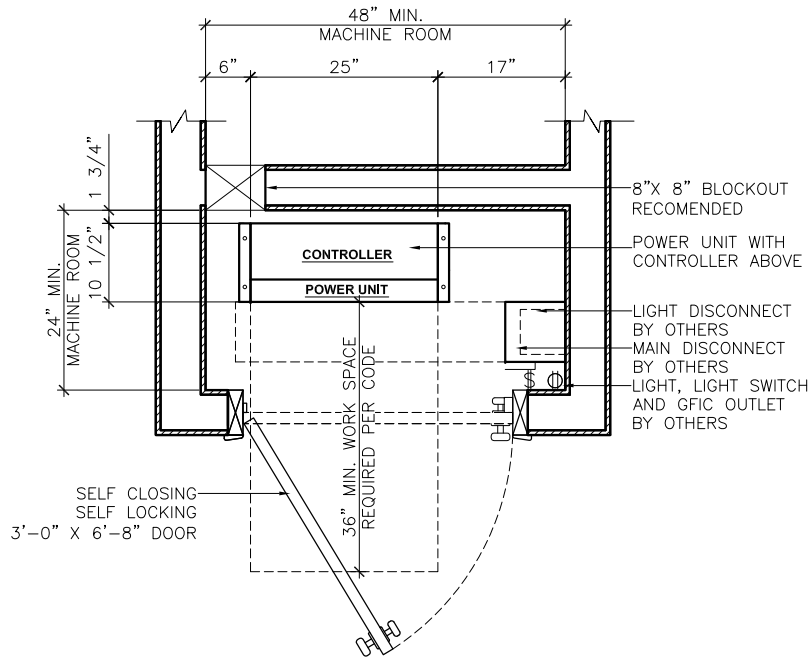


ADVANTAGE HOME ELEVATOR HYDAULIC GENERAL NOTES AND REQUIREMENTS

1. **BY OTHERS:** ARRANGE FOR SUPPLY POWER IN THE MACHINE ROOM PRIOR TO INSTALLATION.
 - A. 230V, 1 PHASE, 30 AMP, 60Hz, FOR MAIN POWER SUPPLY; THE MAIN LINE SUPPLY SHALL CONSIST OF L1 (HOT), L2 (HOT), DEDICTED NEUTRAL AND GROUND INSTALLED THROUGH A LOCKABLE FUSED DISCONNECT WITH AN INTERLOCK AUXILLARY CONTACT KIT.
 - B. 115V, 15 AMP, 60 Hz DEDICATED SERVICE FOR CAB LIGHTING; THE CAR LIGHT SUPPLY SHALL CONSIST OF HOT, NEUTRAL AND GROUND INSTALLED THROUGH A LOCKABLE FUSED DISCONNECT OR CIRCUIT BREAKER.
2. **BY OTHERS:** THE MACHINE ROOM REQUIRES A 115V, 15 AMP, 60 Hz BRANCH CIRCUIT FOR MACHINE ROOM LIGHT WITH NO LESS THAN 10 CANDLE POWER, AND A GFCI DUPLEX RECEPTACLE. PROVIDE A LIGHTING FIXTURE WITH A LIGHT GUARD AND ON/OFF SWITCH TO CONTROL THE LIGHT.
3. **BY OTHERS:** TELEPHONE LINE BROUGHT INTO THE CONTROLLER. A TWO-POSITION, 3.5 MM PLUG IS PROVIDED ON THE CONTROLLER INTERFACE BOARD FOR THE INCOMING PHONE LINE.
4. **BY OTHERS:** SAE 32 TURBINE OIL OR BIO-DEGRADABLE OIL AND HYDRAULIC FEED LINE FROM THE BALL VALVE TO THE PUMP UNIT PER NATIONAL AND LOCAL CODE REQUIRED.
5. **BY OTHERS:** THE GUIDE TOWER MUST BE MOUNTED TO A LOAD BEARING WALL. SEE LAYOUT DRAWINGS FOR RAIL REACTIONS.
6. **BY OTHERS:** SQUARE AND PLUMB HOISTWAY WITH A TOLERANCE NO MORE THAN 1/4" IN 20'-0". THE HOISTWAY RAIL MOUNTING WALL AND THE LANDING MUST BE PERPENDICULAR TO MAINTAIN CODE REQUIRED RUNNING CLEARANCES. THE PIT FLOOR MUST BE SMOOTH, LEVEL AND AT THE PROPER DEPTH. HOISTWAY TO BE FINISHED, CLEAR AND CLEAN.
7. **BY OTHERS:** PER NATIONAL CODE THE HOISTWAY MAY NOT CONTAIN EQUIPMENT, CONDUIT, PIPE OR ANY OTHER MATERIAL NOT RELATED TO THE ELEVATOR. CHECK WITH LOCAL JURISDICTION FOR PERTINENT HOISTWAY FIRE RATING REQUIREMENTS.
8. **BY OTHERS:** SOLID CORE LANDING DOORS MUST BE SET AND ALIGNED WITH THE CAR'S DOOR JAMB TO MAINTAIN A CLEAR AND UNOBSTRUCTED ENTRANCE. VERIFY THIS LOCATION ON THE LAYOUT DRAWINGS. LOCK SETS TO KEEP THE DOOR TIGHTLY CLOSED DURING OPERATION AND SPRING CLOSER HINGES TO BE ABLE TO SHUT DOORS AUTOMATICALLY ARE REQUIRED. NATIONAL CODE REQUIRES THAT THE CLEARANCE BETWEEN THE INSIDE FACE OF THE HOISTWAY DOOR IN THE CLOSED POSITION AND THE INSIDE EDGE OF THE HOISTWAY SILL CANNOT EXCEED 3 INCHES. THE RUNNING CLEARANCE BETWEEN THE INSIDE FACE OF THE HOISTWAY DOOR AND THE CAR GATE CANNOT EXCEED 5 INCHES.
9. ALL ADVANTAGE FIELD WIRING AND CONNECTIONS ARE PROVIDED. HALL CALL AND DOOR INTERLOCK WIRING IS PROVIDED AND LABELED FOR A STANDARD CONFIGURATION WITH THE HALL DOOR STRIKE AND THE RAIL TOWER ON THE SAME SIDE, TO BE LOCATED IN THE WIRING WAY PROVIDED. ALTERNATE CONFIGURATIONS REQUIRE FACTORY NOTIFICATION PRIOR TO RELEASE FOR PRODUCTION.
10. ADVANTAGE HAS BEEN DESIGNED TO REFLECT ASME/ANSI A17.1 SEC. 5.3 MODEL CODE. LOCAL JURISDICTIONS WHO HAVE ADOPTED THE MODEL CODE MAY HAVE AMENDMENTS OR DELETIONS TO THIS CODE. THEREFORE, IT IS THE RESPONSIBILITY OF THE INSTALLER TO COMPLY WITH ANY LOCAL CODES WHICH MAY VARY FROM THE MODEL CODE.

ALL FUSING AND ELECTRICAL HOOK UP TO THE SUPPLY SHOULD BE DONE PER LOCAL CODES.



MACHINE ROOM

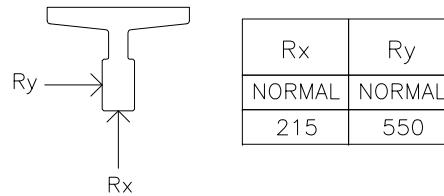
THE MACHINE ROOM LAYOUT AS SHOWN IS A GENERIC REPRESENTATION. DOOR LOCATION MAY DIFFER AND EQUIPMENT IN MACHINE ROOM CAN BE ARRANGED TO SUIT JOB SITE CONDITIONS AS LONG AS PROPER AND CODE APPROVED CLEARANCES ARE PROVIDED.

MOTOR DATA

BASED ON 1 PH / 60 HZ

HP	VOLTAGE	FULL LOAD AMPS	BRAKE VOLTAGE	RPM
3	230	6.2	108VDC	1720

MAX. FORCES ON EACH GUIDE RAIL IN LBS.



ADVANTAGE HYDRAULIC UNIT GENERAL DATA

DESCRIPTION	QTY. (GAL.)
GAL. OF OIL PER FOOT REQUIRED TO FILL JACK	0.368
GAL. OF OIL REQUIRED TO FILL TANK	18.500
GAL. OF OIL REQ. TO FILL 3/4" FEED LINE	0.020

REV	ECN	DESCRIPTION	DRAWN BY	DATE	CHECKED BY
REVISIONS					
FOR DEALER USE ONLY:					DATE: _____
OWNER / CONTRACTOR: _____					

DRAWING TITLE: DRAWING TITLE		DRAWING SUB TITLE	
DEALER NAME: DEALER NAME		JOB NAME	
JOB NAME: JOB NAME	JOB NO: JOB NUMBER	ELEVATOR TYPE: TYPE	REVISION: 00
DRAWING NO: DRAWING NUMBER	DATE: MM/DD/YY	SCALE: NTS	SHEET: 1 OF: 1

TYPICAL DRAWING

PROPRIETARY AND CONFIDENTIAL

THE INFORMATION CONTAINED IN THIS DRAWING IS THE SOLE PROPERTY OF ADVANTAGE HOME ELEVATOR. ANY REPRODUCTION IN PART OR AS A WHOLE WITHOUT THE WRITTEN CONSENT OF ADVANTAGE HOME ELEVATOR IS PROHIBITED.

RELEASE SIGNATURE	DATE
DRAWN BY: E.SANCHEZ	
CHECKED BY: D.BROWN	
ENG. APP: D.BROWN	
DESIGN APP: A.SALEHPOUR	
Q.C APP: M.YOUNG	

ALL DIMENSIONS HAVE BEEN DERIVED FROM THE ADVANTAGE ORDER FORM. ACTUAL SITE CONDITIONS MAY VARY AND ARE THE DEALER'S RESPONSIBILITY TO CONFIRM PRIOR TO ORDER PLACEMENT AND MANUFACTURING. TOLERANCES ARE SET TO INDUSTRY AND NATIONAL CODE STANDARDS UNLESS OTHERWISE NOTED, AND ARE SUBJECT TO CHANGE WITHOUT NOTICE. PLEASE CHECK THE APPROPRIATE ACTION BOX AND RETURN TO THE ADVANTAGE CUSTOMER SERVICE DEPARTMENT.

APPROVED WITH NO EXCEPTIONS

APPROVED AS NOTED

CHANGES AND REAPPROVAL ARE REQUIRED

SIGNATURE _____ DATE _____

ADVANTAGE HOME ELEVATOR

ELEVATOR EQUIPMENT CORP.

4035 GOODWIN AVE. LOS ANGELES, CA 90039
2230 N.W. 12TH STREET RICHMOND, IN 47374

PHONE: (888) 877-4762

FAX: (323) 762-1780